



STEEL AUTHORITY OF INDIA LIMITED

INTERNATIONAL TRADE DIVISION

International Trade Division (ITD) - an ISO 9001:2000 accredited unit of SAIL's Central Marketing Organisation at Kolkata- exports Mild Steel products and Pig Iron produced by SAIL's five integrated steel plants. Ever ready to meet the exacting demands of CMO's international customers, ITD maintains a close liaison with customers as well as production units to cater to the customised requirements of its international customers, in terms of quality, quantity and sizes.

ITD has successfully established the brand name SAIL globally by supplying Rails, Structurals, Merchant products, Wire Rods, Re-bars, Plate Mill Plates, Hot Rolled Coils, Hot Rolled Plates / Sheets, Cold Rolled steels, Galvanised steels, Cold Rolled Non-Oriented (CRNO) coils, Stainless Steel sheets/coils, Chequered Plates, Slabs, Billets, Blooms and Pig Iron, besides cut-to-size Hot Rolled and Cold Rolled materials in all continents. Most products are covered by stringent certifications such as CE marking, TUV and 'U' mark required by sophisticated end uses in European markets.

SAIL products have been exported to countries like USA, Mexico, Europe (UK, Germany, France, Belgium, Italy, Spain, Netherlands, and Portugal), Sudan, Oman, UAE, Saudi Arabia, Japan, China, Korea, Taiwan, Vietnam, Philippines, Singapore, Malaysia, Thailand, Indonesia, Australia, Nigeria, Mozambique, Kenya and many more, as well as in neighbouring countries such as Myanmar, Bangladesh, Sri Lanka and Nepal.



SAIL – proud suppliers of steel for the Indian Navy's Ship "**Sandhayak**"

#SAILTogether

 @SAILsteelofficial  @SAILsteel  @steelauthority  @SAILsteel  @steel-authority-of-india-limited

HOT ROLLED COILS: BSL



| | | |
|--------------------------------|---|-------------------------------------|
| Producing Plant : | Bokaro Steel Plant | |
| Specification : | JISG 3101 SS 400; JISG 3132 SPHT 1/2; JISG 3131 SPHC; JIS G - 3116 295 EN 10025 S235 JR/JR G2; S275 JR; S-355 JO; DIN 17100 ST 37.2/ST 44.2; BS 4360 GR. 40/43A; ASTM A 36 / A 569/A 570 GR 33/40; SAE 1006 - SAE 1018 or equivalent. | |
| Supply Condition : | a) As rolled (through concast route), fully Aluminium Killed with Silicon content of 0.04% max. (optional), not further worked than Hot Rolled, Non-Clad, Non-Plated, Non-Coated, Uncoiled, Unpickled, Unskinpassed, Mill Edge Condition, and on the basis of metric system. b) Guarantee of "No Coil Break" is not available since the same depends on decoiling practice at end user's end as well. c) Coil I.D. - 850 mm. (33½") (approx.) d) Coil O.D. - 2300 mm. (90½") max. | |
| | Width Range in mm.(inch) | Coil Weight in metric tonnes |
| | 940-1100 (37" - 41") | 12-17 |
| | Above 1100 - 1250 (41"-49") | 14-21 |
| | Above 1250 - 1525 (48"-60") | 16-24 |
| | Above 1525 - 1600 (60"-63") | 17-25 |
| | Above 1600 - 1829 (63"-72") | 20-29 |
| Rolling Tolerance: | As per specific ordered and mutual agreement. | |
| Packing : | Bare strapped with high tensile straps of minimum 3 numbers through the eye and minimum 3 numbers across the circumference. | |
| Invoicing : | Based on actual net weight mentioned on the outer layer of the coil. | |
| Sizes : | Thickness in mm. (inch) | Width in mm. (inch) |
| | 1.6 (0.063") | 940 - 1040 (37" - 41") |
| | 1.8 (0.071") | 940 - 1250 (37"-49") |
| | 2.0 (0.079") | 940 - 1320 (37"-52") |
| | >2.0 - 2.9 (0.079" - 0.114") | 940 - 1420 (37"-56") |
| | >2.9 - 4.0 (0.114" - 0.157") | 940 - 1600 (37"-63") |
| | >4.0 - 16.0 (0.157" - 0.63") | 940 - 1829 (37"-72") |
| Markings : | Size/Grade/Coil No./Heat No./Net Wt./Contract No./Made in India | |
| Minimum Order Quantity: | A) Per single width and per grade : 1000 metric tonnes B) Per single Thickness per width : 250 metric tonnes | |
| Port of Loading : | Haldia Port, India & Paradip Port, India | |

HOT ROLLED COILS: RSP



| | | |
|---|---|---------------------|
| Producing Plant : | Rourkela Steel Plant | |
| Specification : | JISG 3101 SS 400, JISG 3132 SPHT 1/2, JISG 3131 SPHC, EN 10025 S235 JR, S275 JR, DIN 17100 ST 37.2/ST 44.2, BS 4360 GR. 40/43A, ASTM A36 / A 569/A 570 GR 33/40, SAE 1006-SAE 1018 or equivalent | |
| Supply Condition : | a) As Rolled (through Concast Route), fully Aluminium Killed with Silicon content of 0.04% Max. (Optional), not further worked than Hot Rolled, Non-Clad, Non-Plated, Non-Coated, Uncoiled, Unpickled, Unskinpassed, Mill Edge Condition, and on the basis of metric system b) "Guarantee of no Coil Break" is not available since the same depends on decoiling practice at end user's end as well c) No Temper pass facility is available d) Coils are handled in "Eye to the Sky" position at the mill and made Eye Horizontal after receipt at Visakhapatnam e) Coil I.D. - 760mm. (approx.) f) Coil O.D. - 1800 mm. max. g) Coil Weight - 8-17 metric tonnes | |
| Rolling Tolerance : (For width and Thickness only) | As per specifications ordered and mutual agreement. For example typical tolerance on thickness is 2/3 value of JISG 3193 | |
| Packing : | Bare strapped with high tensile straps of min. 3 nos. through the eye and min. 3 nos. across the circumference or as mutually agreed | |
| Invoicing : | Based on actual net weight mentioned on the outer layer of the Coil | |
| Sizes : | Thickness (mm.) | Width (mm.) |
| | 2.0-2.2 | 1030-1050 |
| | 2.3-2.5 | 1030-1050 |
| | 2.8-6.0 | 1030-1050/1230-1270 |
| Markings : | Size, Grade, Coil no., Heat no., Contract no., Net weight | |
| Minimum Order Quantity : | Per single width and per Grade : 250 metric tonnes | |
| Port of Loading : | Visakhapatnam, India | |

COLD ROLLED COILS



| | | | | |
|--------------------------------|---|---------------------------|-----------------------------|--|
| Producing Plant : | Bokaro Steel Plant | | | |
| Specification : | DIN 1623 ST 12.03; ASTM A568/366; JIS G3141 SPCC SD; BS 1449 Pt. 1; IS 513 GR "O" or equivalent with Silicon content of 0.04% maximum | | | |
| Supply Condition : | Annealed, Skin Passed, Matt Finish, Oiled, Mill Edges (Serration 2 mm. maximum). | | | |
| Sizes : | Thickness (in mm.) | Width (in mm.) | Coil ID (in mm.) | Maximum Coil Weight. (in mt.) |
| | 0.5 to 0.63 | 900-1020 | 510/600 | 15 |
| | >0.63 to 0.8 | Upto 1270 | 600 | 19 |
| | >0.8 to 2 | Upto 1420 | 600 | 21 |
| Coil OD: | 2200 mm. maximum | | | |
| Tolerance: | Normal as per specification | | | |
| Oil Coating: | Uniform oiling throughout the strip (coating thickness not measured) | | | |
| Surface Roughness: | Normally strips have roughness value below 1.5 micron | | | |
| Packing Condition: | Coils are wrapped in polythene sheet/HDPE, VCI paper and metal packed with edge protector and without inner sleeve | | | |
| Basis of Invoicing : | Actual net weight mentioned on the coils | | | |
| Minimum Order Size: | 250 metric tonnes per size in each size/grade combination | | | |
| Quantity Tolerance: | +/- 5% at seller's option | | | |
| Marking: | Size; Grade; Contract No.; Coil No.; Gross weight; and Net weight | | | |
| Inspection: | By Bokaro Steel Plant. Buyer can also inspect the materials at the Plant before its despatch | | | |
| Port of Loading: | Haldia Port, India Paradip Port, India | | | |

PLATE MILL PLATES-RSP



| | |
|------------------------------|---|
| Producing Plant : | Rourkela Steel Plant- New Plate Mill |
| Capacity : | 0.98 MTPA |
| Specification : | Mild Steel |
| | ASTM A 36 ASTM A 283 GR C JIS-G-3101-SS400 BSEN 10025/1993 S-235/ S-275/S-355/JR/J0/J2N IS-2062 Grade B/Grade C JIS-G-3106-SM400 A/B API 5L PSL2/Grade X42- API 5L PSL2/X60 |
| | Other Parameters: |
| | Thickness : Thickness range: 10-100 mm |
| | Width range: 1500-4100 mm |
| | Length Range: 6000-12000 mm |
| | * Plates upto 50 mm thickness will be trimmed edged on trimming and dividing shear. Plates above 50mm thickness will be flame cut. |
| Packing : | Bare and Loose |
| General Information : | 1. Offers are subject to availability and confirmation of terms and conditions on case to case basis. |
| Port of Loading : | Vishakhapatnam port, India Paradip Port, India |



PLATE MILL PLATES-BSP

| | | |
|--------------------------|--|---|
| Producing Plant : | Bhilai Steel Plant | |
| Specification : | Mild Steel | Thickness Range in mm |
| | ASTM A 36/ASME SA 36M | 10 to 80 (*) |
| | JIS-G-3101-SS400 DIN-17100 RST 37.20/ST 44.2 BSEN 10025 S 275 JR/S235 JR/235 JR G2/235 JR ASTMA 283 M/ASME SA 283 M Grade A/B/C/D JIS-G-3101-SS490 AS3678 Grade 250 | 10 to 80 |
| | BS-4360 Grade 43A/B | 10 to 80 |
| | Ship Building Quality | |
| | ABS Grade A with ABS Certification | 10 to 50.8 |
| | LRS Grade A with Lloyds Certification | 10 to 40 |
| | LRS Grade B with Lloyds Certification | 10 to 40 |
| | High Tensile | |
| | ASTM A 572 M Grade 42/50 Type 2 JIS-G 3106 SM 490 A BSEN 10025 S 355 JR / S 355 J2G3 Can/CSA-G40.21-M-92-300W/44w | 10 to 60 |
| | Thickness | 8 to 12 mm : Maximum 5% Above 40 mm : Maximum 10% |
| | Thickness | Width Range |
| | Above 9 mm upto 15 mm | 2600 to 2750 mm |
| | Above 15 mm upto 20 mm | 2000 to 2750 mm |
| | Above 20 mm | 1500 to 2750 mm |
| | Above 2750 upto 3200 mm available in thickness range of 16-32 mm | |
| | Length Range | 5000 to 12500 mm |
| Packing : | In bundles of 10-15 metric tonnes for plates upto 12 mm thickness. In loose condition for plates above 12 mm | |
| Invoicing : | Theoretical weight basis | |
| Inspection : | Plant inspection | |
| Port of Loading : | Visakhapatnam, India | |

Technical Delivery Conditions:

- All plates shall be supplied in Killed quality (Si-Al Killed)
- Smaller sizes such as 4'x8', 5'x10', etc. can be supplied through flame cutting
- Thickness above 40 mm. shall be supplied with gas cut edges on all sides and with relaxed tolerance on flatness and waviness
- Plates of 8 to 50 mm. thickness and upto 3000 mm. width in following grades can be supplied with 'CE' marking, "U" marking and TUV certification; EN 10025 JR G2, S275 JR, S355 JR, S 355 J2G3 and S355 JO +AD 2000 W1 can be supplied upto 8 to 40 mm.
- High tensile grades can be supplied upto 10% of the total order. Exclusive orders in these grades are not possible

Total no. of sizes : 25-30 for an order size of 5000 metric tonnes

GALVANISED PRODUCTS



| | | | |
|-------------------------------|--|---|--|
| Producing Plant : | Bokaro Steel Plant | | |
| Specification : | ASTM A653M; JISG 3302 (1987) SGCC, SGCD-1; DIN 17162 ST 02 | | |
| | Coating : | 120/180/200/220/275 gm/sq. mtr. Nominal on both sides | |
| | Quality : | Chromated Regular Spangle, Continuously Hot Dipped, Lock Forming, Uncoiled with Strip Edges cut at Pickling stage | |
| | Technical Delivery Conditions: | Coil ID : | 600 mm. |
| | | Coil Weight : | 14-15 metric tonnes Max, without welding joint |
| | | Y.S. : | 250 MPa Max. |
| | | UTS : | 270-410 MPa |
| | | Hardness: | 65 HRB max. |
| | Works test certificate shall contain actual chemistry and LFQ conformity only Staggered winding will be provided While flatness is not measured, coils are stretch levelled with 1.5-2% elongation to improve flatness | | |
| Tolerance : | As per applicable ASTM specification | | |
| Packing Condition : | Coils are first wrapped with VCI paper followed by Polythene sheet. It is then covered with HDPE and securely packed in metallic covering with eye rings Edge protectors are fitted on the sides of the coils Only Non-Wood Packing will be used | | |
| Basis of Invoicing : | Nett weight | | |
| Sizes/Qty. : | 0.50 mm. x 900 /1000 mm. 0.63 - 1.6 mm. x 900 / 1000 / 1100 / 1225 mm. | | |
| Stamping on Material : | On line, in ink, and comprising of "SAIL JYOTI" brand, coating, weight and date of production etc. | | |
| Markings on Coil Tag : | Size, Grade, Contract No., Coil No., & Gross Weight (incl. weight of packing) | | |
| Inspection : | By Bokaro Steel Plant. Final inspection would be required by buyer at plant before despatch of materials | | |
| Port of Loading : | Haldia Port, India Paradip Port, India | | |



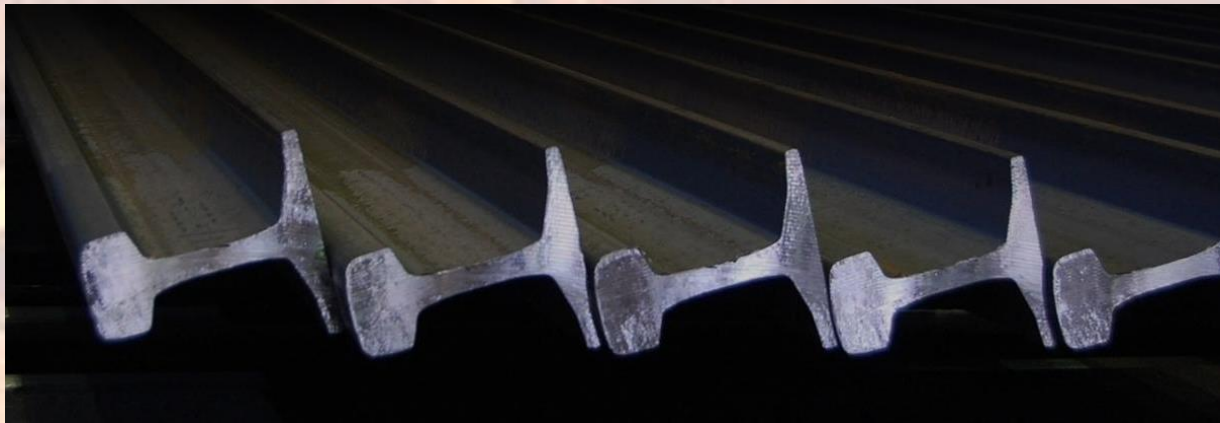
HOT ROLLED SHEET/PLATE

| | | | | | |
|---------------------------------|---|-------------------|-------------------|--------------------|--------------------|
| Producing Plant : | Bokaro Steel Plant | | | | |
| Specification : | JIS G 3101 SS 400; JIS G 3132 SPHT 1/2; JIS G 3131 SPHC; EN 10025 S235 JR; S275 JR; DIN 17100 ST 37.2/ST 44.2; BS 4360 GR. 40/43A; ASTM A 36 / A569 / A 570 GR 33/40; SAE 1008 - SAE 1018 | | | | |
| Supply Condition : | a) As rolled (through concast route), fully Aluminium Killed with Silicon content of 0.04% Max. (optional), not further worked than Hot Rolled, Non-Clad, Non-Plated, Non-Coated, Uncoiled, Unpickled, Unskinpassed, Mill Edge Condition, and on the basis of metric system | | | | |
| | b) No Temper pass facility is available | | | | |
| Rolling tolerance: | As per specific ordered and mutual agreement. | | | | |
| Packing : | Bare Packing in bundles of 8-9 metric tonnes max. | | | | |
| Invoicing : | Based on actual net weight mentioned on the test certificate | | | | |
| Size Range : | Thickness | Min. Width | Max. Width | Min. Length | Max. Length |
| | (mm.) | (mm.) | (mm.) | (mm.) | (mm.) |
| | 2 | 940 | 1,300 | 2,500 | 2,500 |
| | 2.1-2.9 | 940 | 1,350 | 2,500 | 3,000 |
| | 3.0-4.0 | 940 | 1,400 | 2,500 | 3,000 |
| | 4.1-4.4 | 940 | 1,500 | 2,500 | 3,000 |
| | 4.5-4.9 | 940 | 1,600 | 4,000 | 5,000 |
| | 5.0-10.0 | 940 | 1,830 | 4,000 | 8,000 |
| Minimum Order Quantity : | Per Single Size : 100 metric tonnes | | | | |
| Port of Loading : | Haldia Port, India & Paradip Port, India | | | | |

WRC



| | |
|----------------------------|--|
| Producing Plant : | IISCO Steel Plant |
| Size Range (Dia) : | 5.5, 6.0, 6.5, 7.0, 8.0, 10.0, 12.0, 16.0, 20.0, 22.0 mm. |
| Specification : | SAE: 1006, 1008, 1010, 1012, 1015, 1018, 1020 IS 7904: HC-38, 42, 46, 48, 50, 52, 56, 58, 60, 62, 66, 68, 70, 72, 76, 78, 80, 82 IS 2879: EWNr. Boron alloying can be done as per customers' request |
| Dimensions : | a) Coil outer diameter: 1250 mm. b) Coil inner diameter: 850-950 mm. c) Coil width : 1500 mm. |
| Coil Weight : | 2030 Kg approx. |
| Packing : | 4 straps radially through the eye and 2 straps over the circumference |
| Invoicing : | On actual weight basis |
| Minimum Order Qty : | 600 metric tonnes per size |
| Port of Loading : | Haldia Port, India & Paradip Port, India |



| | | | | | | | | | | | |
|--|-------------|--|-----------|----------|----------|-----------------------|------------------------|--|---------------|--|-----------------------------|
| Producing Plant: | | Bhilai Steel Plant | | | | | | | | | |
| Specification : | | R260 60E1 Profile | | | | | | | | | |
| Size Ranges : | | 13 Meter Length (10% of Short Length in 9 – 12 Meters) | | | | | | | | | |
| Chemical Composition (Percentage) | | | | | | Mechanical Properties | | | | | |
| Grade | C | Mn | Si | S* (Max) | P* (Max) | Al (Max) | Mo (Max) | Hydrogen content in liquid steel (Max) | UTS (Mpa) Min | Elongation % on gauge length = 5.65√So Min | Running Surface Hardness ** |
| 880 | 0.60 - 0.80 | 0.80 - 1.30 | 0.1 - 0.5 | 0.030 | 0.030 | 0.015 | - | 1.6 | 880 | 10.0 | Min.26 |
| So = Cross sectional area of tensile test piece in mm ² | | | | | | | | | | | |
| * 0.040 maximum for finished rail. | | | | | | | | | | | |
| ** Desirable Value | | | | | | | | | | | |
| Quality Parameter/ Criteria | | UIC Specification | | | | | EURO Norm | | | | |
| Hydrogen | | <3 PPM | | | | | <2.5 PPM | | | | |
| UTS(Mpa) | | 880 | | | | | 880 | | | | |
| Elongation (%) | | 10% | | | | | 10% | | | | |
| Reduction Ratio | | 8 | | | | | 9 | | | | |
| Hardness (BHN) | | 260 | | | | | 260 | | | | |
| Fracture Toughness (Mpa/m) | | N.S. | | | | | 29-35 | | | | |
| Telegue Strength (Mpa/m) | | N.S. | | | | | 300 (5 Million Cycles) | | | | |
| Residual Stress (N/sq.mm) | | N.S. | | | | | 250 | | | | |
| Basis of Invoicing : | | Actual weight Basis | | | | | | | | | |
| Inspection : | | Plant Inspection & Third party Inspection by Independent Surveyor at the port. Buyer can also inspect the material at the producing plant. | | | | | | | | | |
| Port of Loading : | | Vishakhapatnam port, India | | | | | | | | | |

BILLET/ BLOOM



| | | | | |
|--------------------------|---|--------------------------------|--------------|-------------|
| Producing Plant : | Durgapur Steel Plant | | | |
| Production Process : | BOF, Continuous Casting | | | |
| Sizes : | Billet : 125x125x9000/12000mm. Bloom : 160x230/210x9000/12000 mm 240x350x9000/12000 mm 150x350x9000/12000 mm 150x300x9000/12000 mm | | | |
| Specification : | With the following chemical composition as per ladle sample analysis(*) | | | |
| | C | 0.17 - 0.23 | 0.24 - 0.31 | 0.17 - 0.23 |
| | Mn | 0.50 - 0.90 | 0.50 - 0.90 | 0.40 - 0.75 |
| | S&P | 0.05 Max each | | |
| | Si | 0.10% - 0.35% (Silicon killed) | | |
| | (*) Restrictions within the specified ladle sample analysis can be agreed depending on the availability Note : Chemistry different from above may also be supplied after confirmation by us | | | |
| Supply Condition : | All billets shall be supplied in 'As Cast' condition only | | | |
| Rolling Tolerance : | As per IS : 2830/1992 with the following | | | |
| | | Billet | Bloom | |
| | Tolerance on Dimension | +/-5mm | +/-6mm. | |
| | Rhombidity | +10 mm (Max) | +15mm. (Max) | |
| | Tolerance on Length | +/-150 mm | +/-150 mm | |
| Packing : | Loose | | | |
| Invoicing : | On actual weight basis | | | |
| Minimum Order Quantity : | 2700 metric tonnes | | | |
| Port of Loading : | Haldia Port, India | | | |

BILLET/BLOOM



| | | | | | |
|----------------------|---|----------------------------|-----------------------------|-----------------------------|----------------------------|
| Producing Plant : | IISCO Steel Plant | | | | |
| Production Process : | BOF, Continuous Casting | | | | |
| Sizes : | Billet : 150x150x9000/12000 mm. Bloom : 200x280x9000/12000 mm | | | | |
| Specification : | With the following chemical composition as per ladle sample analysis(*) | | | | |
| | | Billet | Billet | Billet | Bloom |
| | C | 0.17 - 0.23 | 0.14 - 0.22 | 0.27 - 0.32 | 0.14-0.2 |
| | Mn | 0.60 - 1.0 | 0.40 - 0.70 | 0.70 – 1.0 | 0.40 - 0.70 |
| | Si | 0.10% max (Semi Killed) | 0.15-0.35% (Semi Killed) | 0.15-0.35% (Semi Killed) | 0.1-0.35% (Semi Killed) |
| | S&P | 0.05 Max each | | | |
| | (*) Restrictions within the specified ladle sample analysis can be agreed depending on the availability Note : Chemistry different from above may also be supplied after confirmation by us | | | | |
| Supply Condition : | All billets shall be supplied in 'As Cast' condition only | | | | |
| Rolling Tolerance : | As per IS : 2830/1992 with the following | | | | |
| | | | Billet | Bloom | |
| | Tolerance on Dimension | | +/-5mm | +/-6mm. | |
| | Rhombidity | | +10 mm (Max) | +15mm. (Max) | |
| | Tolerance on Length | | +/-150 mm | +/-150 mm | |
| Packing : | Loose | | | | |
| Invoicing : | On actual weight basis | | | | |
| Minimum Order Qty : | 2700 metric tonnes | | | | |
| Port of Loading : | Haldia Port, India Paradip Port, India | | | | |



CONTACT US

International Trade Division

6th Floor, ISPAT BHAWAN

40 JLN ROAD, KOLKATA 700071

sailitd.cmo@ismgr.nic.in

| Name | Product/Functional Area | Mobile | E-mail ID |
|------------------|---|----------------|---------------------|
| Munish Ahuja | ED Sales and ITD | +91 9414024909 | edsales.itd@sail.in |
| Vinod Singhal | CGM ITD | +91 9968605520 | cgmitd.cmo@sail.in |
| Anuj Gupta | Flat products, Slabs | +91 9175890472 | akgupta@sail.in |
| Ajit Tomer | All customers in the Middle East and Africa | +971 525289520 | astomer@sail.in |
| Amit Kumar Goyal | All customers in Nepal | +91 9414024912 | sailnepal@gmail.com |
| Neha Sharma | Long Products, Semis | +91 3323013103 | neha@sail.in |